

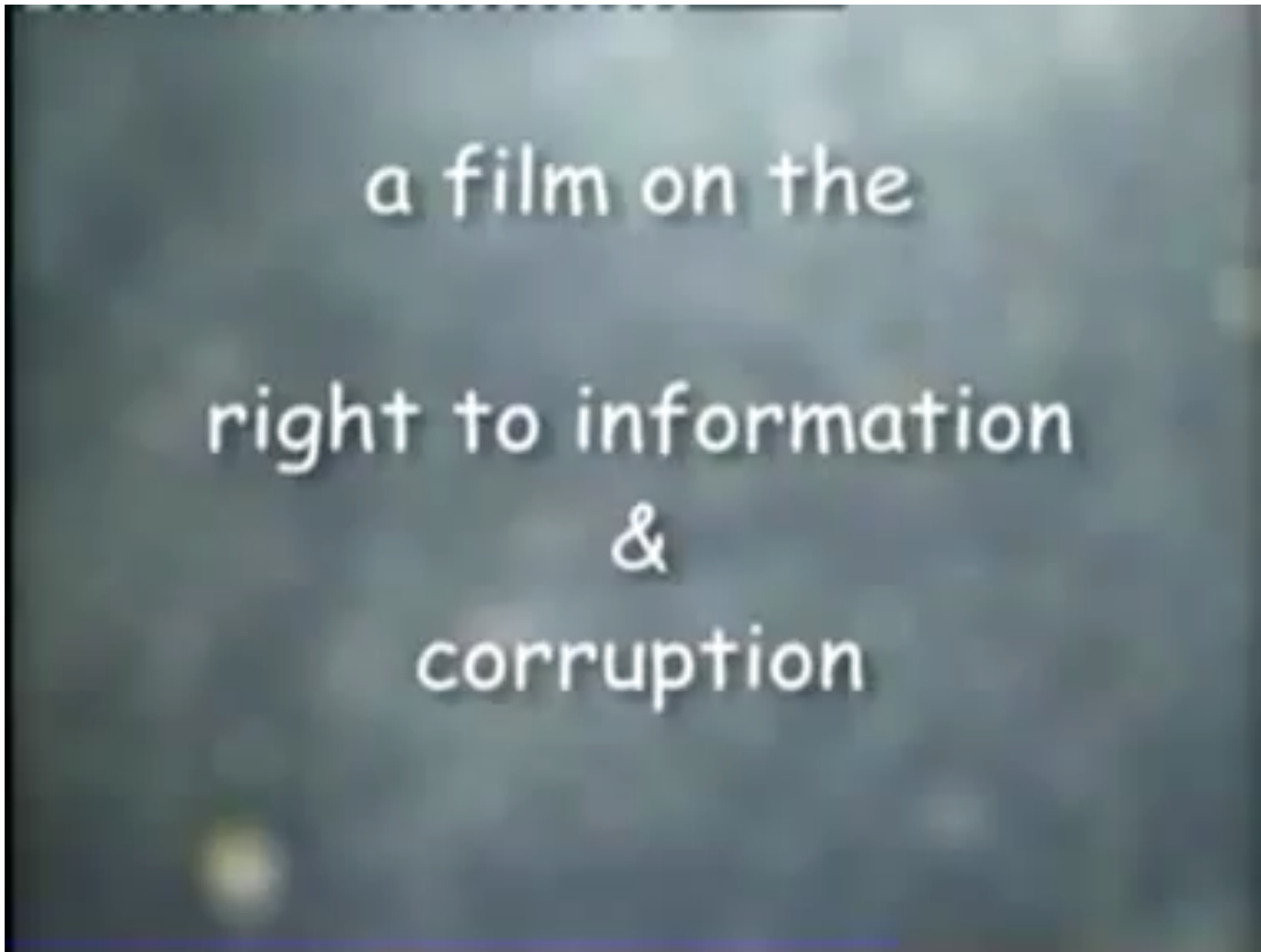
Information Access in the Digital Age - the case of RTI & Open Data

Rakesh Dubbudu
Founder – FACTLY & Co-Convenor of NCPRI



- 🔍 Information/Data access is limited by varied factors
- 🔍 RTI & Open Data have contributed a great deal to democratization of access
- 🔍 Information Asymmetry leads to multiple issues
- 🔍 You are at the forefront of enabling access

Movement for Transparency





RTI – 15 years on

- 🔍 ~ 7 million applications annually (only 10% women applicants)
- 🔍 Varied Users & user groups
- 🔍 Few public authorities receive bulk of the applications
- 🔍 Better implementation directly linked to Political & Bureaucratic Intent
- 🔍 Most applications for grievances & proactive disclosure related issues
- 🔍 Only reactive disclosure, very little progress on proactive

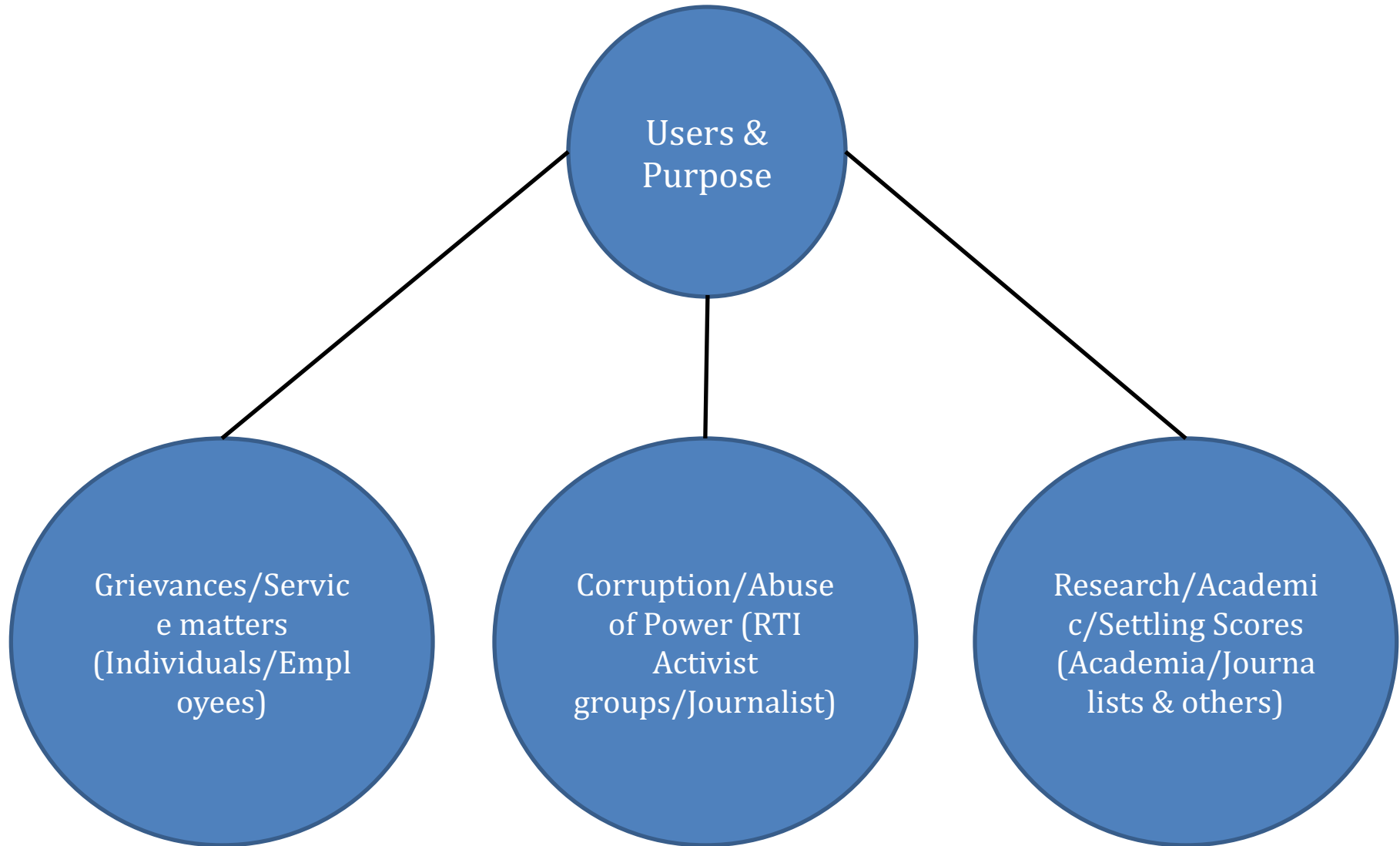


Numbers related to RTI applications

- 🔍 Ministry of Finance (~ 2 lakh in 2017-18)
- 🔍 MEITY , Railways , MHRD (close to a lakh each in 2017-18)
- 🔍 At the state level – Revenue, School Education, Panchayati Raj, Municipal Administration etc.



RTI – Users & Purpose





Issues

- 🔍 Allegations of Misuse
- 🔍 Record Management
- 🔍 Understanding Information needs. Towards customized 'Proactive Disclosure' – even to counter 'Misinformation'
- 🔍 Grievance Redressal/Service matters & other such expectations from RTI
- 🔍 Basket of Measures – Need of the hour
- 🔍 Role of 'Open Data'

Essential elements of Proactive Disclosure



- 🔍 Available through multiple channels (forms)
- 🔍 Findable/Searchable
- 🔍 Relevant
- 🔍 Comprehensible
- 🔍 Cost of access
- 🔍 Up to Date



Open Data

🔍 The GoI Policy & other State Policies

🔍 Challenges

- Culture of Secrecy
- Fear
- Lack of the big picture
- Lack of Capacity & Understanding
- Reliability
- Lack of Granularity & Localization
- Lack of Standards

Government & Official Data Sources



- 🔍 The Census
- 🔍 The Agricultural Census
- 🔍 Representative Surveys
 - NFHS - National Family Health Survey
 - DHS – Demographic Health Survey
 - NSS – National Sample Survey
 - SRS – Sample Registration System
 - CRS – Civil Registration System
 - PLFS – Periodic Labour Force Survey
- 🔍 Annual Surveys or Reports
 - Annual Survey of Industries
 - Annual Employment –Unemployment Survey
 - Statistical Year book of MoSPI
 - National Accounts Data
 - NCRB Reports
 - Annual Reports of Ministries/Departments/Organizations
 - Annual Statistical Publications by States
 - CACP reports for MSP



Government & Official Data Sources

- 🔍 Lok Sabha & Rajya Sabha Questions (more than 5 lakh)
- 🔍 Parliament Standing Committee reports
- 🔍 Ministry/Department Websites (MHA – padma, casualties, IAS IPR etc.)
- 🔍 Press Information Bureau & NITI Aayog (aspirational districts)
- 🔍 Official Gazette
- 🔍 CAG Reports & annual reports/outcome budget reports of ministries
- 🔍 Large scheme specific websites and relevant reports
- 🔍 State Level
 - Directorate of Economic & Statistics (Eco Stat)
 - State Archives & State Gazettes & Legislative Assembly Questions
 - State Level reports & DISE Data
 - Scheme specific websites
 - Department websites & annual reports
- 🔍 Open Data portals



Way Forward

- 🔍 Have an 'Open Mind'
- 🔍 Follow the 'Spirit' not the 'Letter'
- 🔍 Put yourself in the applicant's shoe
- 🔍 Provide comprehensive information not piecemeal, think of the potential conflicting information
- 🔍 Always prioritize 'Public Interest'
- 🔍 Focus on customized 'Proactive Disclosure' – don't limit yourself to Section 4



Find Us



www.factly.in



www.fb.com/FactlyIndia



[@FactlyIndia](https://twitter.com/FactlyIndia)



rakesh@factly.in